

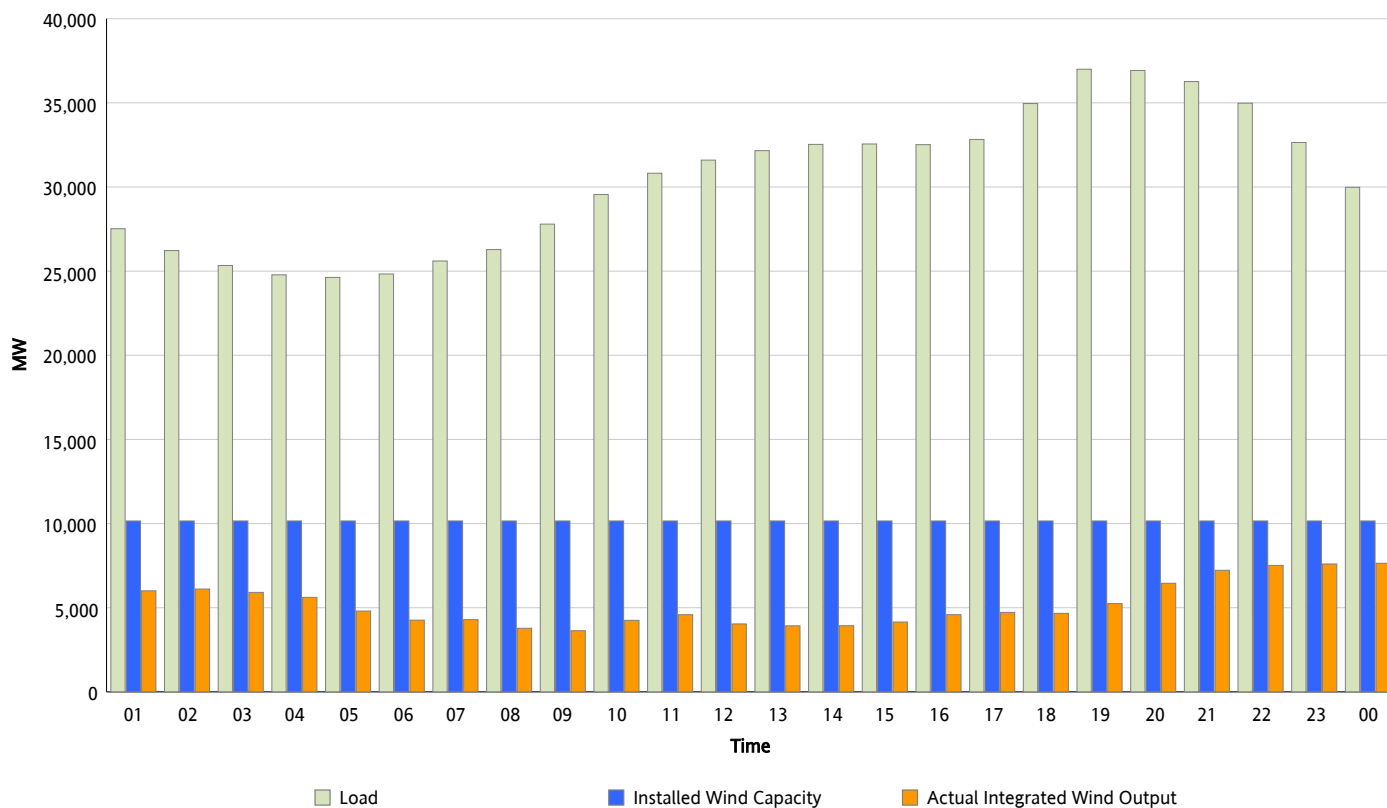


## ERCOT Grid Operations

### Wind Integration Report : 12/09/2012

Peak Load	36,998 MW
Load Peak Hour (HE)	19
Wind Over Peak	5,244 MW
Wind Record 11/10/12	8,521 MW
Max Wind Value*	7,844 MW
Wind Peak Time	23:18
Wind Integration %	25.78 %

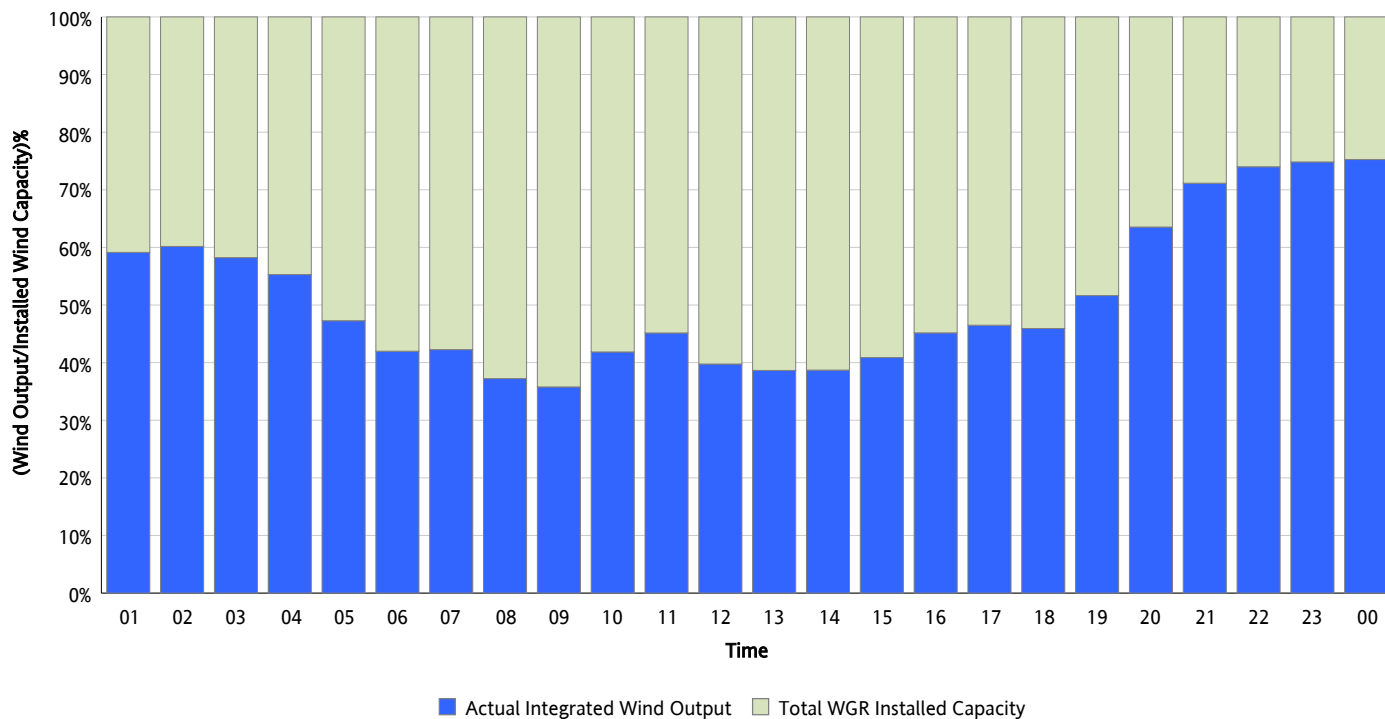
**Hourly Average Actual Load vs. Actual Wind Output**  
**12/09/2012**



*\* Wind Record and Wind Max represent instantaneous values and the rest of the values are integrated over the hour*

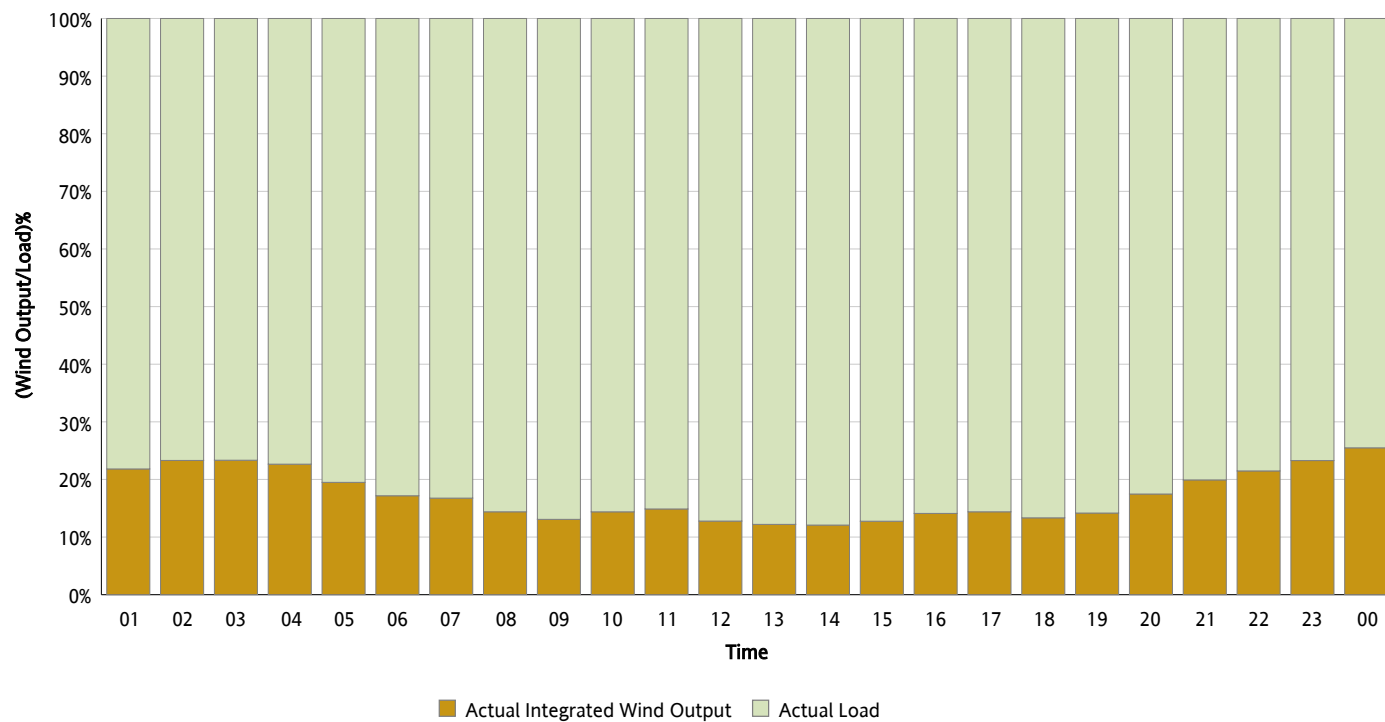
## Actual Wind Output as a Percentage of the Total Installed Wind Capacity

12/09/2012



## Actual Wind Output as a Percentage of the ERCOT Load

12/09/2012



## ERCOT Load vs. Actual Wind Output

12/02/2012 - 12/09/2012

